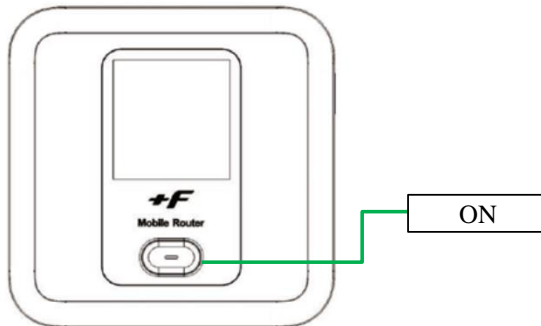


# HOW TO CONNECT

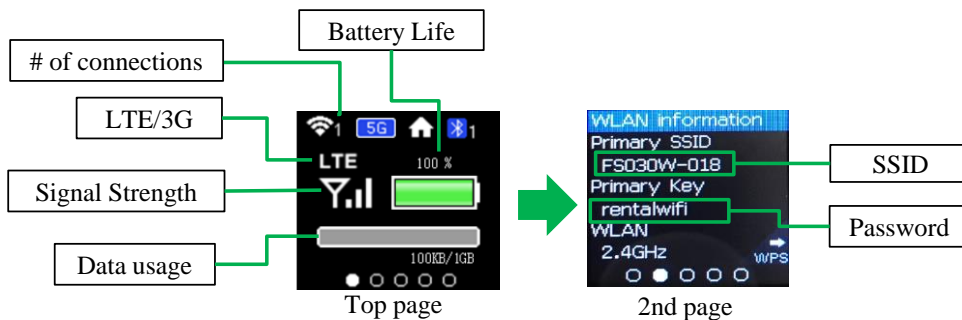
## 1 TURN ON the Pocket Wifi

Press the ON/OFF button for 5 seconds, it will be switched on.

Front view

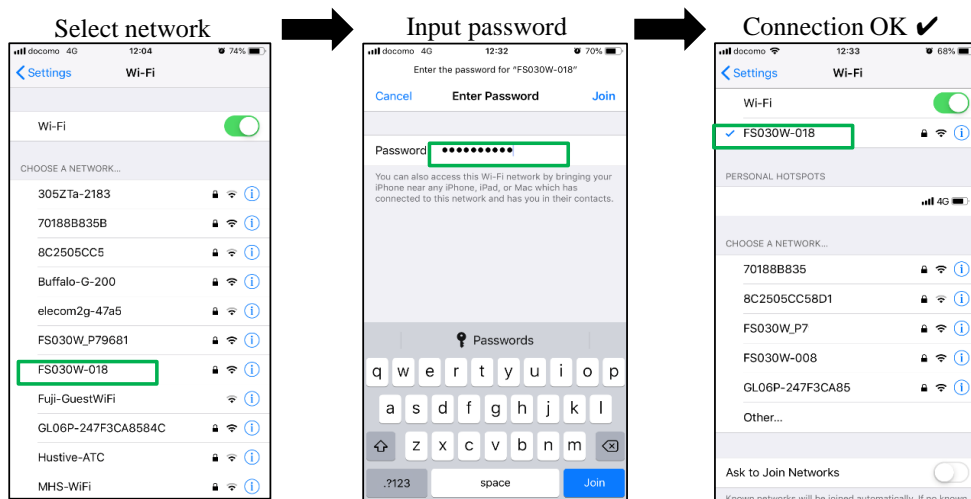


Display



Hint: Press the ON button will go to the 2nd page, SSID and Password can be found.

## 2 SELECT "FW030W-XXX" in the wifi list shown in your Smart Phone. Then enter the password



### NOTE:

- It will be good for you to turn on the "In flight mode" to avoid accidental data roaming.
- You can switch off the Pocket Wifi by pressing the ON button for 5 seconds.